

## EXERCISES FOR PRACTICE



1. Write the two parts shown below with proper vertical alignment, at the sounding pitch for each.

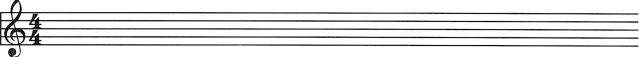
B♭ Trpt.  F Hn. 

Concert 

Detailed description: This exercise shows two parts for B♭ Trumpet and Flute. The B♭ Trpt. part is in G major, 4/4 time, with a melody featuring eighth and sixteenth notes and a triplet of eighth notes. The F Hn. part is in G major, 4/4 time, with a melody of eighth and sixteenth notes and a triplet of eighth notes. Below these is a blank concert staff with treble and bass clefs for transcription.

2. Combine the parts for oboe 1 and oboe 2 on a single staff.

Oboe 1  Oboe 2 

Oboe 1 

Detailed description: This exercise shows two parts for Oboe 1 and Oboe 2. The Oboe 1 part is in G major, 4/4 time, with a melody of eighth and sixteenth notes, dynamic markings of mp, mf, p, and f, and a fermata. The Oboe 2 part is in G major, 4/4 time, with a melody of eighth and sixteenth notes, dynamic markings of mp, p, mf, and f, and a fermata. Below is an empty oboe staff with a treble clef for transcription.

3. Create a piano reduction below of this excerpt from Brahms's *Variations on a Theme by Haydn*, Op. 56a.

Fl. **B**

Ob.

Klar. (B)

Fag.

(B)  
Hr. *p* *in F* *p*

1Viol.

2Viol.

Br.

Vcl.

K-B. **B** *dolce*

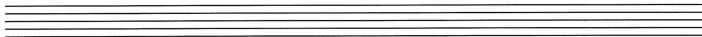
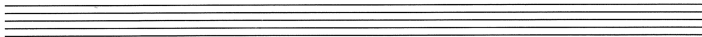
*dolce*

*dolce*

*dolce*

*dolce*

*dolce*



4. Condense the excerpt from Haydn's Symphony No. 103 on the staves below.

Fl. I

Ob.

Cl.

Fag. a 2

Cor. (Es)

Tr. (Es)

Timp.

VI.

Vla.

Vc. e B.

